

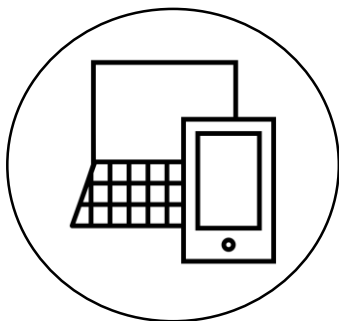
# LEARNING AT HOME



Each morning, log in to Show My Homework using your **own** username and password



Make a note of your work for the day. Then put your phone away and turn off any devices you don't need



At the end of the day, log back on to upload work if your teachers have asked for it. Rest and spend time with your family



Use your timetable to help structure your day. Take breaks. Do your best – but know you can count on us for support now (we'll do our best!) and when you come back

Stay Indoors



Keep Fit



Wash Hands



Work Hard



Be Nice



## Year 11 Timetable

	Monday	Tuesday	Wednesday	Thursday	Friday
<b>P1/P2</b> 9:00-10:45	Option 11E Art, Computing, Geog, History	English	Option 11H French, Geog, History, Spanish, Tech	English	English
<b>P3/P4</b> 11:00-12:45	Option 11F Art, PE, RE, Spanish, Support	Maths	Option 11G Drama, French, Geog, Music, Tech, Support	Maths	Maths
<b>P5/P6</b> 13:15-15:00	Option 11G Drama, French, Geog, Music, Tech, Support	Science	Option 11F Art, PE, RE, Spanish, Support	Science	Science
<b>P7/P8</b> 15:15-17:00	Option 11H French, Geog, History, Spanish, Tech	Additional revision / reading	Option 11E Art, Computing, Geog, History	Additional revision / reading	Additional revision / reading